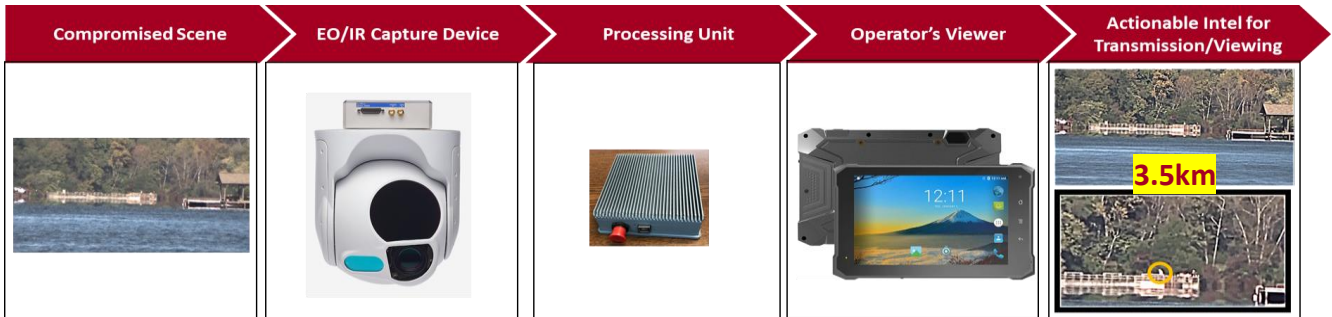
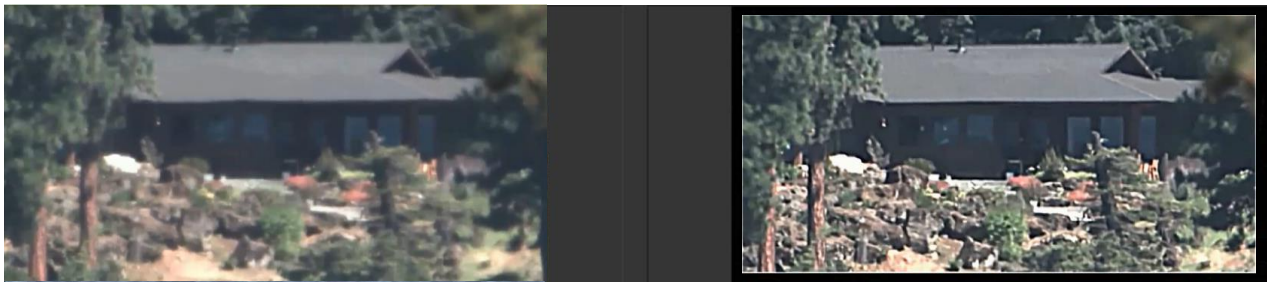


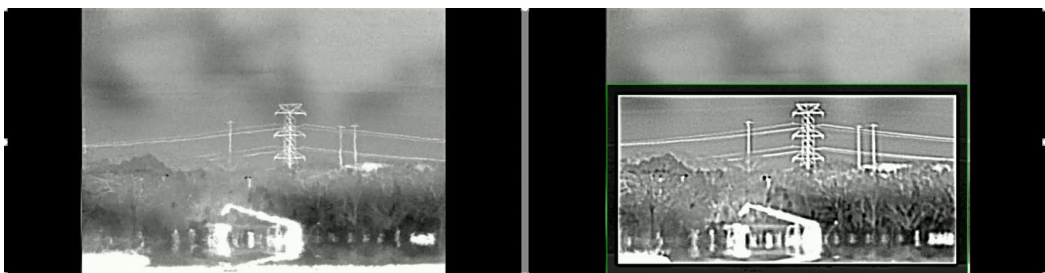
Soldier-Portable kit with a small processor integrated between an EO/IR Turret and a tablet, to provide real-time enhanced, super-resolved, and atmospherically-corrected video, allowing the detection of a person from distances of up to 5km



Core Features: *Atmospheric Turbulence and Jitter Mitigation, Environmental and Lighting Enhancements, Super-Resolution, and a User-Friendly Graphical Interface.*



Video Enhancement and Atmospheric Correction in the Visible from 2.2km



Video Enhancement and Atmospheric Correction in the Infrared from 3.6km

Product Configuration

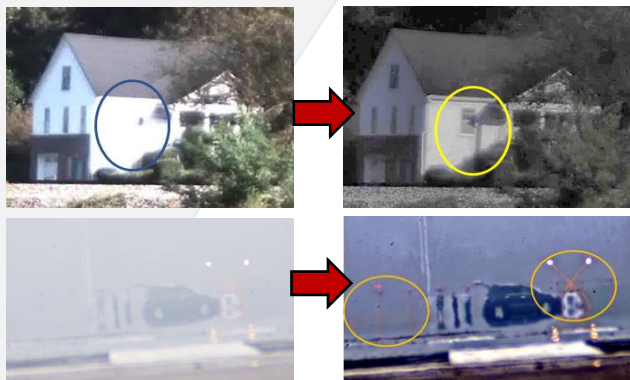


Comes as a Kit, Processor only, or Windows Software

Future Features

- Miniaturization to credit card size
- Solar Powering
- Remote Radio Communication
- AI-based Detection/Tracking

- *Provides Revolutionary Insights to Near-Peer Threats in a Multi-Domain Operations Environment*
- Automatic Correction of Poor Lighting Conditions
- Automatic Correction of Poor Weather Conditions
- Automatic Detection and Mitigation of Camera Jitter
- Correction of Atmospheric Distortions
- Real-Time, up to 1080p60 Input



Specifications

5K-TVS edge processor will be suitable for many air, ground and sea operations. 5K-TVS kit configuration will be suitable for ground and sea operations. Phelps2020 can also provide **custom configurations** to meet client specific technical requirements.

Size & Weight	Current Dimensions (enclosure)	6.25 x 5.5 x 1.75 in
	Current Weight (enclosure and board)	~2 lbs
	NGB Board only (Dim & Weight)	from 2x3x0.5 in &
Power	Power Supply	9-18VDC
	Power Consumption	~11 Watt
Video	Connectors	1G Ethernet (mil-spec)
	Resolutions	Up to 1080P
Speed	30/60 fps	Real-time
Environmental	Operating Temperature	Approx. -20C to 50C