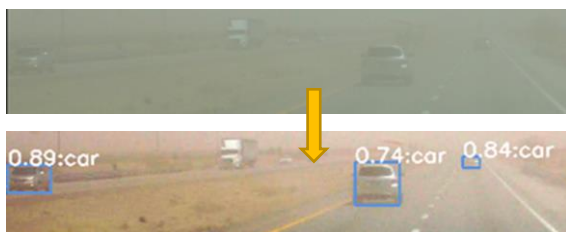
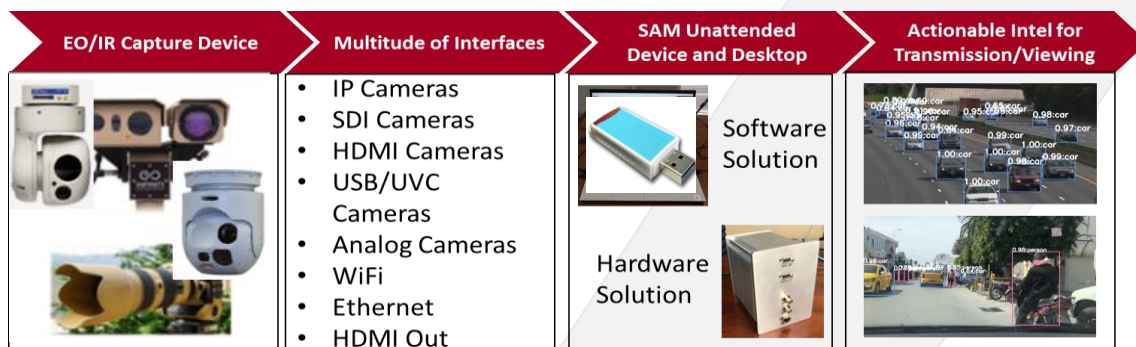


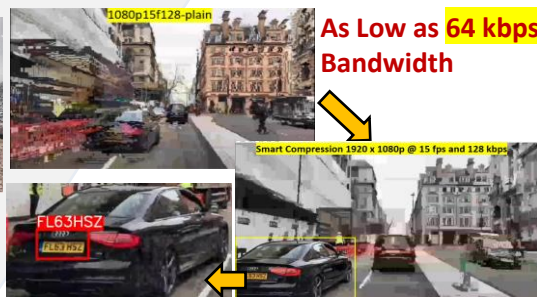
Plug-and-play processor integrated between the sensor and the analyst to provide **real-time**, enhanced, tagged and lowered bandwidth actionable intelligence from **4k60fps EO/IR video**. The solution increases an analyst's ability to **interpret and react** to overwhelming data amounts.



**Secure-AI Car Detection in Fog**





**Face Recognition with Backlighting**



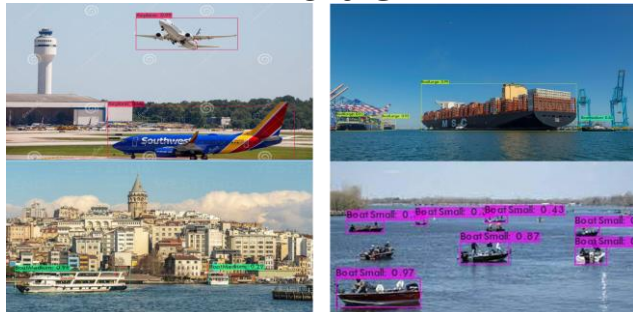
**AI-Driven Compression**

**Core Features:** EO/IR Enhancement, Atmospheric Turbulence and Jitter Mitigation, Automatic Object Detection, Face Recognition, License Plate Recognition, Hull and Tail Number Matching, Intelligent Video Compression, and Streaming. Edge-AI also includes Smart Recording, Systematic FTP/SFTP Uploading, and a Web-GUI.

	<ul style="list-style-type: none"> <li>Multi-input sensor-agnostic</li> <li>0.25k, 1k, 2K, 4K, 8K size videos</li> <li>30, 60, 120, 240, 480 fps</li> <li>Short and long-range</li> </ul>	<ul style="list-style-type: none"> <li>AI for custom, unlimited, object classes</li> <li>Transfer learning</li> <li>Computer Vision</li> <li>Sensor fusion</li> </ul>	<ul style="list-style-type: none"> <li>Sub-frame latency</li> <li>&gt;10x more efficient dissemination</li> <li>Orders of magnitude lower SWaP</li> <li>Modular scalable reconfigurable</li> </ul>
	<h2>Phelps20/20's Family of Edge Devices</h2>		
			

## AI for More Classes and More Spectral Bands

### Visible



### Thermal



## Solutions Configurations

<p>Windows or Linux-based Processing</p>	<p>Fully Autonomous Edge Processing Automatically Uploading to FTP and streams out to users in any protocol</p>
<p>Remotely-Controlled Edge Processing Via Web-based Application</p>	<p>On-site Accelerator via Tethered Monitor and Keyboard</p>

AI Decision Support Solutions via Web and On-Premise GUIs

## Specifications

Edge-AI's configurations are made to be suitable for air, ground and sea operations. Phelps2020 can provide **custom configurations** to meet client specific technical requirements.

Size & Weight	Dimensions (enclosure)	From 3 to 200 in <sup>3</sup>
	Weight (enclosure and board)	From 2 oz to 8 lbs
Power	Voltage	9-18 VDC
	Power Consumption	From 9 to 75 Watt
Video	Connectors	Ethernet/WiFi, HD-SDI, BNC Analog, HDMI, USB/UVC
	Resolutions/Frame Rates	Ingests up to 4K60FPS
Environmental	Operating Temperatures	Approx. -20C to 49C

- **Provides Revolutionary Insights into Near-peer Threats in a Multi-Domain Operations Environment**
- Automatic Vehicle, People, Boat, and Airplane Detection in Degraded Environments
- License Plate, Face, Hull, and Tail Number Recognition
- Connects to Almost Any EO/IR Device in the Field Hassle-Free
- Intelligently Conserves Critical Information in Constrained Bandwidth
- Real-Time, up to 4K60fps
- **Menu-based, Application-Driven Customization Available**